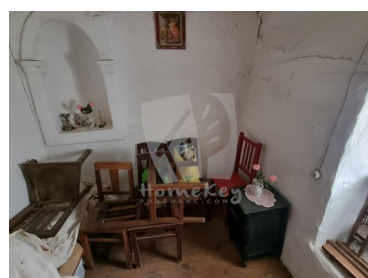




## São Pedro do Esteval - Townhouse



3

Bedrooms



1

Bathrooms



30

Area (m²)



31

Land Area (m²)



21 500 €

(EUR €)

## Casa Padrão - Your refuge in the village by the Ocreza River!

Discover your refuge in the village by the Ocreza River! We present a charming single storey house of 30 m², consisting of 4 rooms, which awaits your vision to become the home of your dreams or an excellent investment for vacation rental. Located in a square with good access, this property is a unique opportunity.

The water and electricity connections are already installed, offering a comfortable starting point for your renovations.

The house has a small storage area in the basement. At the main entrance, you will find 4 rooms and a hallway that leads you to a cozy terrace. The bathroom is outside. A wooden staircase gives access to the attic, where you can create more rooms and customize the space to your liking. The exterior walls are built are of stone, the roof structure is made of wood and covered with roof tiles.

T +351 934 850 145 (mobile call) · T +351 274834036 (fixed call) · E [info@homekeyportugal.com](mailto:info@homekeyportugal.com)

Rua Principal s/n, Santo André das Tojeiras  
AMI 15569

<sup>1</sup> (Call to national fixed network) | <sup>2</sup> (Call to national mobile network)



In the village, you will find a café and a dynamic association, which promotes various activities for the community. Don't miss the opportunity to enjoy starry nights at the Miradouro e Baloço do Peixe do Rio. Just 5 km away, São Pedro do Esteval offers a gas station, public swimming pool, Parish Council and an extension of the Health Centre. Proença-a-Nova, 24 km away, has all the necessary services.

In the surroundings, the town of Padrão offers access to various leisure activities, including river beaches and boat trips. The Pracana Dam, located just 8 km away, is the ideal place for fishing lovers.

Contact us today to learn more and schedule a viewing!

## Property Features

- Views: Countryside views, Village view
- Energetic certification: Exempt
- Terrace
- Mains electricity
- Septic tank
- Mains water
- Access: Tarmac Road

**T +351 934 850 145 (mobile call) · T +351 274834036 (fixed call) · E [info@homekeyportugal.com](mailto:info@homekeyportugal.com)**

**Rua Principal s/n, Santo André das Tojeiras  
AMI 15569**

<sup>1</sup> (Call to national fixed network) | <sup>2</sup> (Call to national mobile network)